

MATH 6 – QUIZ 7
6 APRIL 2012

Name: SOLUTIONS

NO CALCULATORS

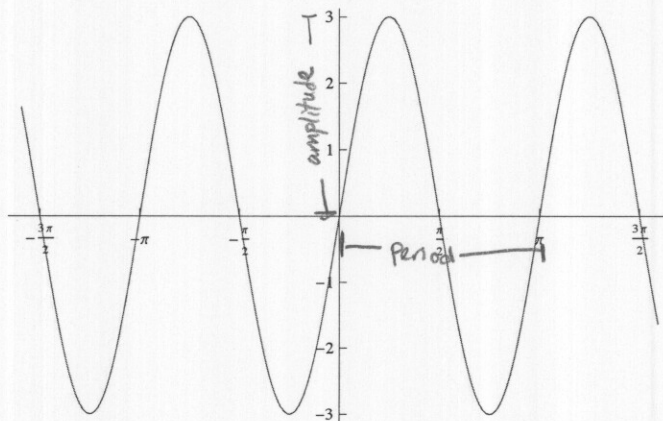
1. Evaluate $\sin \frac{21\pi}{4}$.

$$\sin \frac{21\pi}{4} = \sin \left(\frac{21\pi}{4} - 2\pi \right) = \sin \frac{13\pi}{4} = \sin \left(\frac{13\pi}{4} - 2\pi \right) = \sin \frac{5\pi}{4}$$



$$= \boxed{-\frac{\sqrt{2}}{2}}$$

2. Identify the amplitude and period from the graph below. Use them to write the equation being graphed.



$$\text{Amplitude} = 3$$

$$\text{Period} = \pi = \frac{2\pi}{b} \Rightarrow b = 2$$

$$\boxed{y = 3 \sin 2x}$$